

Preparedness for ASF in Finland

Taina Aaltonen

Ministry of Agriculture and Forestry

Tuija Gadd

Finnish Food Safety Authority Evira

2.6.2017 Riga

7.6.2017



Import risks



ruo ja

7.6.201

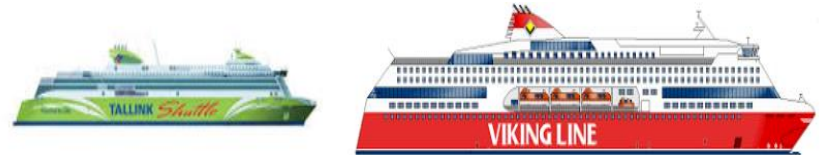


Increasing disease awareness

- New measures in late 2016/ 2017:
- Nov 2016: a campaign at Helsinki harbour to check travelers and their cars for illegal meat
- High level meeting (Feb 2017) chaired by the Minister (MAF) to discuss further measures to increase the awareness of travelers (Ministry of Transport and Communications, Customs Authorities, Airport, Helsinki Harbour, Railways, Ship transport companies, Evira)



- Enhancement of checks for illegal meat products at places of first arrival



7.6.2017



Increasing preparedness

- ASF- seminar in Helsinki 18.10.2016 with Commission and the Russian Veterinary Authorities
(Moscow + St. Petersburg)
- BTSF- training on ASF for Finnish veterinarians in Helsinki – spring 2017
- Expert group meetings (twice in 2016)
- Desk top exercise "Christmas pig" in Evira – dec. 2016
- Regular trainings for veterinarians (contingency day etc.)

7.6.2017



Improving biosecurity for outdoor pigs

- A Decree by MAF to prohibit outdoor keeping of pigs from 1 January 2018, unless there are double fences around the enclosure
- Financial *de minimis* -support for covering partly the expenses of building fences before 1 Jan 2018

7.6.2017



Improving biosecurity at farm level

- ASF-training and Biosecurity checks at farm level
 - > second round of an industry driven project
 - > training of farmers for self- assessment by using Biocheck -assessment tool
 - > auditing farms later by the industry



7.6.2017



 mmm.fi
ruokaa ja luonnonvaroja



Your subtotal for external biosecurity is **77 %** (avg. 71 %)

 Your subtotal for internal biosecurity is **43 %** (avg. 59 %)

 The total score is **60 %** (avg. 65 %)

| Nr | Description | Score | Avg |
|----|-------------|-------|-----|
|----|-------------|-------|-----|

External biosecurity

| | | | |
|---------------------------------------|-----------------------------------------------------------------|-------|------|
| A | <u>Purchase of animals and semen</u> | 72 % | 90 % |
| B | <u>Transport of animals, removal of manure and dead animals</u> | 83 % | 71 % |
| C | <u>Feed, water and equipment supply</u> | 57 % | 50 % |
| D | <u>Personnel and visitors</u> | 100 % | 68 % |
| E | <u>Vermin and bird control</u> | 70 % | 71 % |
| F | <u>Environment and region</u> | 80 % | 55 % |
| <i>Subtotal External biosecurity:</i> | | 77 % | 71 % |

Internal biosecurity

| | | | |
|---------------------------------------|---------------------------------------------------------------|------|------|
| A | <u>Disease management</u> | 60 % | 70 % |
| B | <u>Farrowing and suckling period</u> | 57 % | 61 % |
| C | <u>Nursery unit</u> | 71 % | 72 % |
| D | <u>Fattening unit</u> | 36 % | 67 % |
| E | <u>Measures between compartments and the use of equipment</u> | 50 % | 51 % |
| F | <u>Cleaning and disinfection</u> | 0 | 52 % |
| <i>Subtotal Internal biosecurity:</i> | | 43 % | 59 % |

NA = Not applicable

Total: 60 % 65 %

 Your subtotal for external biosecurity is **73 %** (avg. 71 %)

 Your subtotal for internal biosecurity is **58 %** (avg. 59 %)

 The total score is **66 %** (avg. 65 %)

| Nr | Description | Score | Avg |
|----|-------------|-------|-----|
|----|-------------|-------|-----|

External biosecurity

| | | | |
|---------------------------------------|-----------------------------------------------------------------|-------|------|
| A | <u>Purchase of animals and semen</u> | 100 % | 90 % |
| B | <u>Transport of animals, removal of manure and dead animals</u> | 74 % | 71 % |
| C | <u>Feed, water and equipment supply</u> | 30 % | 50 % |
| D | <u>Personnel and visitors</u> | 71 % | 68 % |
| E | <u>Vermin and bird control</u> | 70 % | 71 % |
| F | <u>Environment and region</u> | 70 % | 55 % |
| <i>Subtotal External biosecurity:</i> | | 73 % | 71 % |

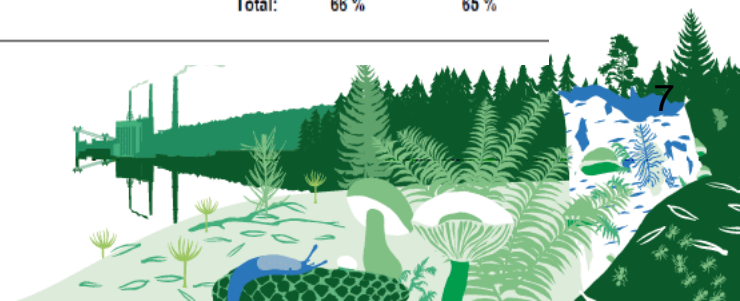
Internal biosecurity

| | | | |
|---------------------------------------|---------------------------------------------------------------|-------|------|
| A | <u>Disease management</u> | 80 % | 70 % |
| B | <u>Farrowing and suckling period</u> | 43 % | 61 % |
| C | <u>Nursery unit</u> | 71 % | 72 % |
| D | <u>Fattening unit</u> | 100 % | 67 % |
| E | <u>Measures between compartments and the use of equipment</u> | 48 % | 51 % |
| F | <u>Cleaning and disinfection</u> | 33 % | 52 % |
| <i>Subtotal Internal biosecurity:</i> | | 58 % | 59 % |

NA = Not applicable

Total: 66 % 65 %

7.6.2017



Monitoring for ASF

| | 2011 | 2012 | 2013 | 2014 | 2015 | 2016 |
|-----------------------------------------------------|------|------------|------------------|-----------------|--------------|---------------|
| Dom.pigs - monitoring - disease suspicion* | 78 | 1057 31 | 1053 73/100** | 1062 73/40** | - 42/91** | - 24/128** |
| Farmed wild boar | 42 | 33 | 43/1** | 55/2** | 107/130** | 60** |
| Wild wild boar | 8 | 8 | 9/9** | 37/138** | 31/171** | 366** |
| Total | 128 | 1129 | 1178/110** | 1227/180** | 180/392** | 24/554** |

*includes case suspicions and pathological samples for other reasons
antibody detection / **virus detection

7.6.2017



WB surveillance in Finland in 2017

| time | N | active | passive* | female | age? | young | adult | male | age? | young | adult | gender? | age? | young | adult |
|---------|------------|------------|----------|-----------|----------|-----------|-----------|-----------|----------|-----------|-----------|----------|----------|-------|-------|
| Jan-Feb | 79 | 77 | 2 | 39 | 1 | 19 | 19 | 40 | 2 | 16 | 22 | | | | |
| March | 22 | 19 | 3 | 13 | 1 | 5 | 7 | 9 | 1 | 3 | 5 | | | | |
| April | 19 | 15 | 4 | 10 | 0 | 1 | 9 | 8 | 0 | 3 | 5 | 1 | 1 | | |
| | 120 | 111 | 9 | 62 | 2 | 25 | 35 | 57 | 3 | 22 | 32 | 1 | 1 | | |

February: road accident in Sipoo, wb found dead in Kalajoki

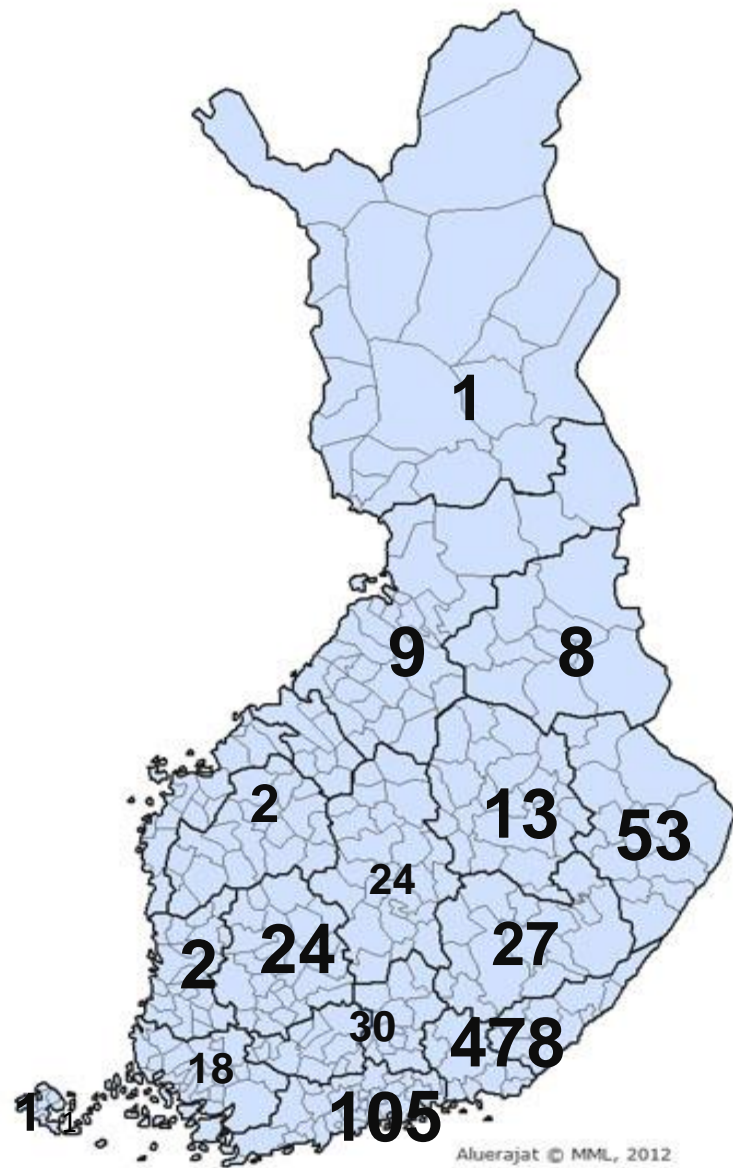
March: road accident in Lapinjärvi, wb found dead in Pyhtää and Pälkäne

April: road accident in, wb found dead in Salo, Heinola and Sysmä

7.6.2017



**Cumulative
numbers of
hunted/dead
wb
tested for ASF
in 2014-
30.4.2017
(n = 138, 171,
366 and 120
respectively)
in Finland**

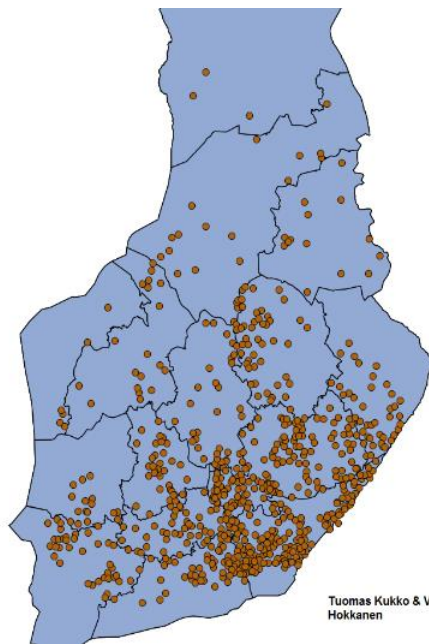


Aluerajat © MML, 2012

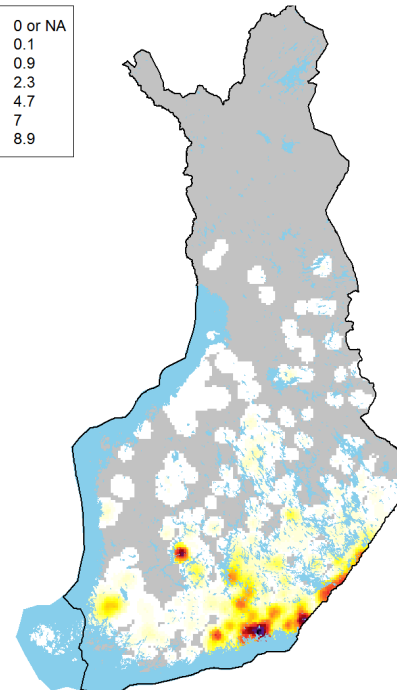
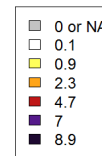
Warsau oct 2016



WB population in Finland in 2016



Wild boar density estimated by moose hunters
(individuals / 1000 ha)



Data collected from the Finnish "Own Game" – services, in connection with moose hunting information

7.6.2017



Control of wild boar population and co-operation with the hunters

- present population estimated to be 3000 – 3500
 - in 2015: 1200-1300 (target set to cut the WB population by 50 %)
- a special project launched 2017 in Natural Resources Institute (Luke) to improve the assessment of the wild boar population
- Amendments to hunting legislation
 - the use of light (in force)
 - the possibility to use enclosures (autumn 2017)
 - improving the notification of the hunting bags (in process)
- Focus on hunting young female wild boar
- Under consideration:
the compulsory reporting of feeding places and
prohibition to feed other than for hunting purposes



7.6.2017



Thank you!

7.6.2017

